



# DySpan 2015

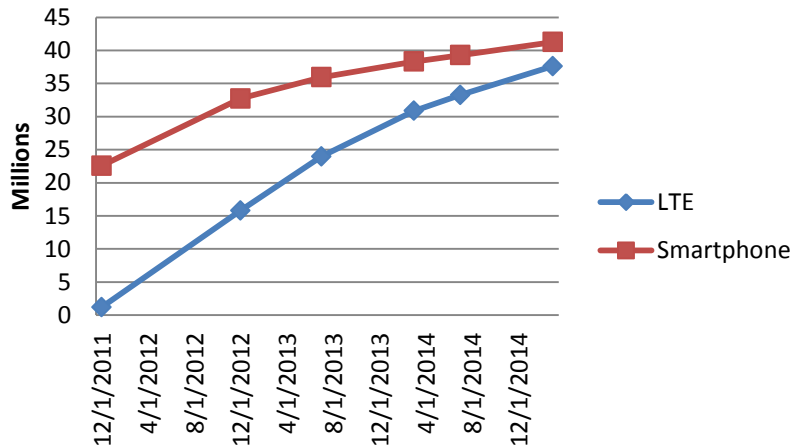
Stockholm 29<sup>th</sup> Sept – 2<sup>nd</sup> Oct

Barry Lewis

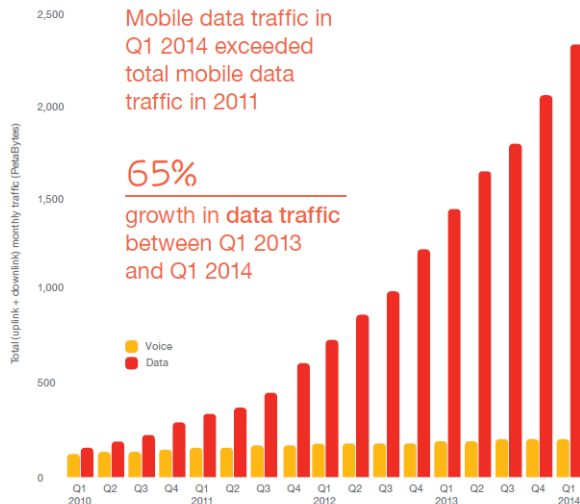
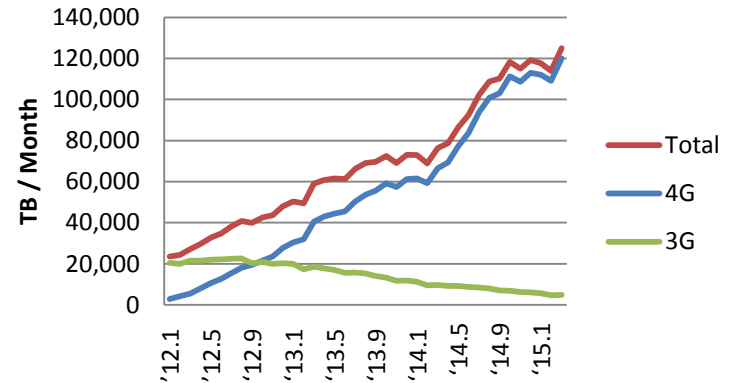
Samsung Electronics

# Mobile data use keep growing

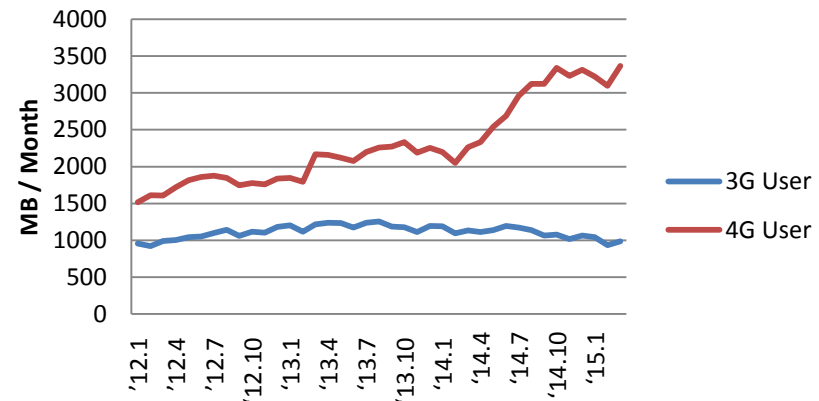
## Korean smartphone growth



## Korean Total mobile traffic

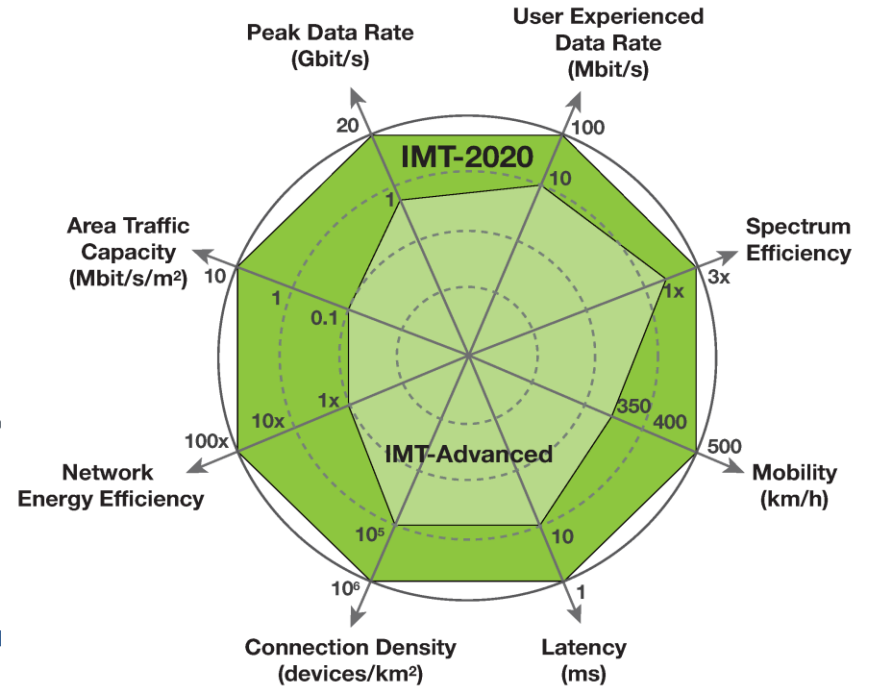
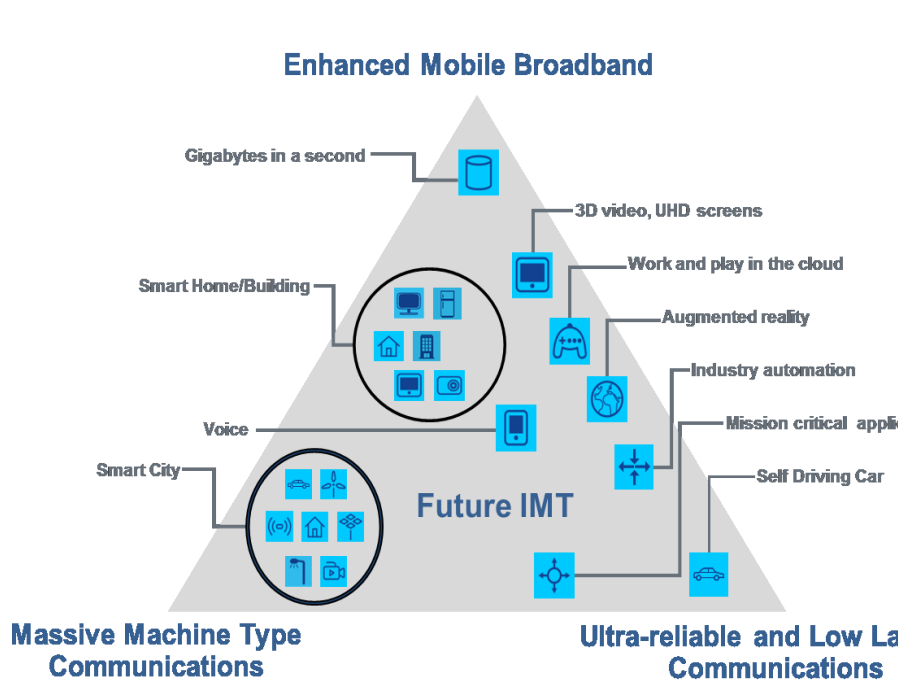


## Average Data Use per Month



Source - [www.msip.go.kr](http://www.msip.go.kr)

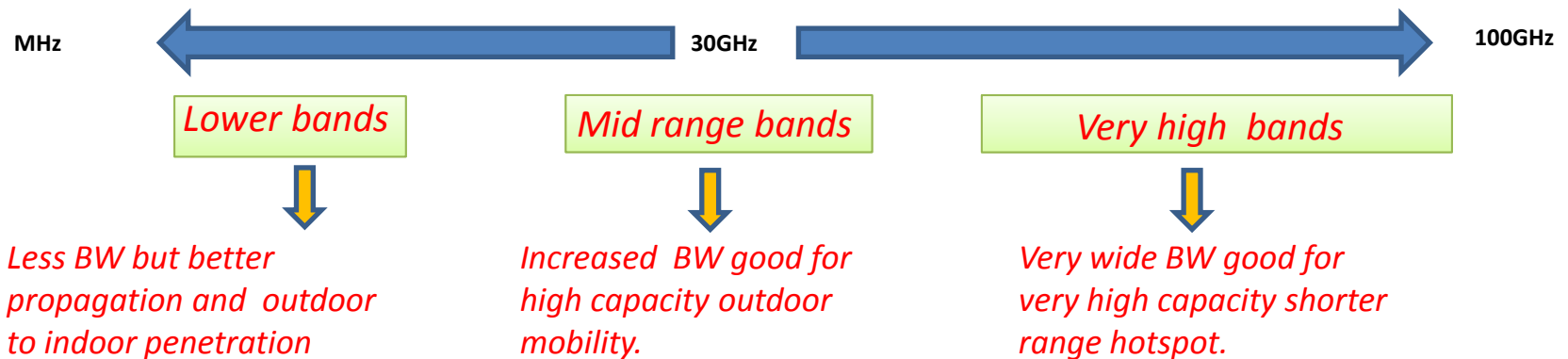
# 5G Vision Capabilities



ITU: Usage Scenarios and Capabilities for IMT-2020

# Timely consideration of new 5G spectrum

## High Frequency Bands for Contiguous Bandwidth



## Meeting the 5G future requirements:

- Very high data rates requiring large contiguous bandwidth.
- Spectrum in a number bands to address diverse 5G requirements and applications.
- Spectrum both below and above 30GHz is important.
- Continued technology development for below 6 GHz bands
- Giving relevance to the research and development activities.
- IMT identification of harmonized bands on a global basis.



# WRC-15 AI 10 Proposals



GHz	6-20	20-30		30-40		40-50		50-60	60-70	70-80	80-100
APT		25.25 25.5		31.8 33.4	39	47	47.2 50.2	50.4 52.6	66	76	81 86
CEPT		24.5 27.5		31.8 33.4		40.5 43.5	45.5 48.9		66 71	71 76	81 86
CITEL	10 10.45	23.15 23.6	24.25 27.5	27.5 29.5	31.8 33	37 40.5	45.5 47	47.2 50.2	50.4 52.6	59.3 76	
RCC		25.5 27.5		31.8 33.4	39.5 40.5	40.5 41.5	45.5 47.5	48.5 50.2	50.4 52.6	66 71 76	81 86

Common Proposals

Non-MS Common Proposal

All Regions have finalised a proposal for a WRC-19 AI on high frequency IMT